



*johnnie-O*

SPRING 2024  
BIG & TALL



# JMPO3000BT THE ORIGINAL

2/15

THE CLASSIC JOHNNIE-O FOUR BUTTON POLO  
SIDE VENTS - APPLIED PLACKET - POCKET WITH LOGO EMBROIDERY  
95% COTTON / 5% SPANDEX JERSEY

SIZES: 2XB-4XB, LT-4XLT  
4498

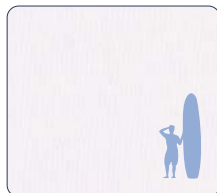
## HANGIN' OUT



STRETCH



WHITE



WAKE



# JMPO7160BT HEATHERED ORIGINAL 2.0

2/15

THE CLASSIC JOHNNIE-O FOUR BUTTON POLO - SIDE VENTS - APPLIED  
PLACKET - POCKET LOGO EMBROIDERY  
57% COTTON / 38% MODAL / 5% SPANDEX

SIZES: 2XB-4XB, LT-4XLT  
49118

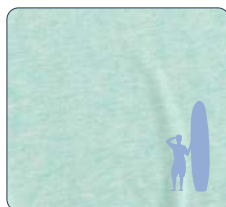
## HANGIN' OUT



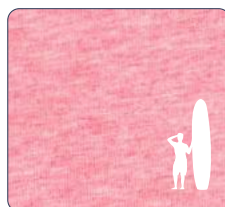
STRETCH



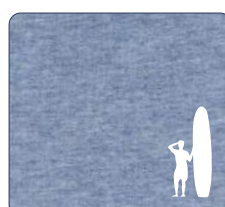
SNORKEL



POMEGRANATE



COASTAL



**PREP-FORMANCE**

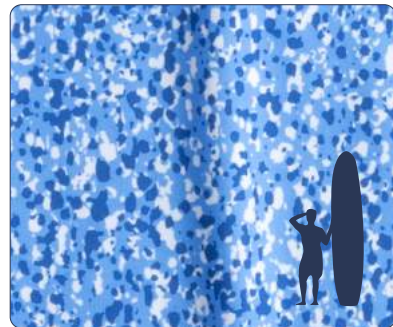
**JMPO7830BT HITCHENS**

2/15



**PRINTED** PREP-FORMANCE JERSEY 3 BUTTON POLO  
SIDE VENTS - LEFT CHEST OPEN - EMBROIDERED LOGO  
ON CENTER BACK YOKE  
93% POLYESTER / 7% SPANDEX STRETCH JERSEY MOISTURE WICKING  
SIZES: 2XB-4XB, LT-4XLT  
52128

MALIBU



**PREP-FORMANCE**

**JMPO7860BT CATCH**

2/15



**PRINTED** PREP-FORMANCE JERSEY 3 BUTTON POLO  
SIDE VENTS - LEFT CHEST OPEN - EMBROIDERED LOGO  
ON CENTER BACK YOKE  
93% POLYESTER / 7% SPANDEX STRETCH JERSEY MOISTURE WICKING  
SIZES: 2XB-4XB, LT-4XLT  
52128

MONSOON



**PREP-FORMANCE**

**JMPO7440BT STINES**

2/15



**PRINTED** PREP-FORMANCE JERSEY 3 BUTTON POLO  
SIDE VENTS - LEFT CHEST OPEN - EMBROIDERED LOGO  
ON CENTER BACK YOKE  
93% POLYESTER / 7% SPANDEX STRETCH JERSEY MOISTURE WICKING  
SIZES: 2XB-4XB, LT-4XLT  
52128

PEACOCK



**PREP-FORMANCE**

**JMPO7450BT HARKINS**

2/15



**PRINTED** PREP-FORMANCE JERSEY 3 BUTTON POLO - SIDE VENTS  
LEFT CHEST OPEN - EMBROIDERED LOGO ON CENTER BACK YOKE  
93% POLYESTER / 7% SPANDEX STRETCH JERSEY MOISTURE WICKING  
SIZES: 2XB-4XB, LT-4XLT  
52128

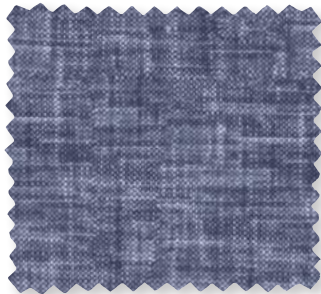
MALIBLU



**JMWS2870BT**  
AVIN

2/15

**PRINTED** JERSEY KNIT SHORT SLEEVE SHIRT  
SPREAD COLLAR - TWEENER BUTTON - TONAL  
EMBROIDERED LOGO ON BOTTOM TAIL  
CONTRAST TRIM INSIDE NECK AND INSIDE  
YOKE  
87% NYLON / 13% SPANDEX KNIT  
SIZES: 2XB-4XB, LT-4XLT  
72178

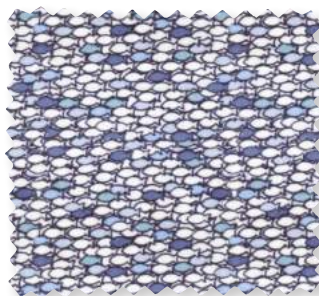


LAKE

**JMWS2890BT**  
BENTO

2/15

**PRINTED** JERSEY KNIT SHORT SLEEVE SHIRT  
HIDDEN BUTTON DOWN SPREAD COLLAR  
TWEENER BUTTON - TONAL EMBROIDRED  
LOGO ON BOTTOM TAIL CONTRAST TRIM  
INSIDE NECK AND INSIDE YOKE  
87% NYLON / 13% SPANDEX KNIT  
SIZES: 2XB-4XB, LT-4XLT  
72178



LAKE

**JMWS2900BT**  
SAMANA

2/15

**PRINTED** JERSEY KNIT SHORT SLEEVE SHIRT  
HIDDEN BUTTON DOWN SPREAD COLLAR  
TWEENER BUTTON - TONAL EMBROIDRED  
LOGO ON BOTTOM TAIL CONTRAST TRIM  
INSIDE NECK AND INSIDE YOKE  
87% NYLON / 13% SPANDEX KNIT  
SIZES: 2XB-4XB, LT-4XLT  
72178



WHITE

**PREP-FORMANCE**



EASY CARE



STRETCH



LIGHTWEIGHT

**JMWL8460BT**  
**SCULL**

2/15

**TWILL** LONG SLEEVE WOVEN SHIRT  
BUTTON DOWN COLLAR - TWEENER BUTTON  
CONTRAST TOP AND BOTTOM BUTTON HOLE  
FRENCH FRONT PLACKET - SEAMLESS POCKET  
STEALTH LOGO

28% POLYESTER / 28% BAMBOO  
40% NYLON/ 4% SPANDEX HEATHER  
MOISTURE WICKING

SIZES: 2XB-4XB, LT-4XLT  
65158



WAKE

**JMWL8490BT**  
**ALZER**

2/15

**QUEENS OXFORD** LONG SLEEVE WOVEN  
SHIRT - HIDDEN BUTTON DOWN COLLAR  
TWEENER BUTTON - CONTRAST TOP AND  
BOTTOM BUTTON HOLE - FRENCH FRONT  
PLACKET - SEAMLESS POCKET - STEALTH  
LOGO

28% POLYESTER / 28% BAMBOO  
40% NYLON/ 4% SPANDEX HEATHER  
MOISTURE WICKING

SIZES: 2XB-4XB, LT-4XLT  
65158



TAHITIAN

# JMST3180BT DALE 2.0

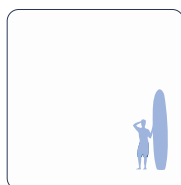
2/15

CREW NECK TEE - RIB COLLAR - CHEST POCKET WITH EMBROIDERED LOGO  
TONAL REVERSE COVERSTITCH AT NECK, SLEEVE AND BOTTOM  
55% COTTON / 45% MODAL

SIZES: 2XB-4XB, LT-4XLT  
2559



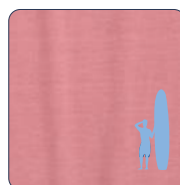
WHITE



MALIBLU



BANDANA



NAVY





# JMLT3010BT EDISON

2/15



GARMENT DYED LONG SLEEVE HOODED TEE - JOHNNIE-O FLAG LABEL ON WEARERS RIGHT TAIL - "JOHNNIE-O" PRINTED LOGO ON WEARERS RIGHT ARM  
100% COMBED COTTON JERSEY - FABRIC DYED AND GARMENT WASHED WITH SILICONE

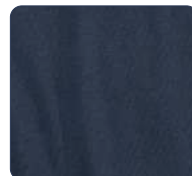
SIZES: 2XB-4XB, LT-4XLT  
3789



WHITE



WAKE



## JMST3210BT RETRO TUBE 2/15

---

CREW NECK TEE - RIB COLLAR - CHEST POCKET WITH EMBROIDERED LOGO TONAL REVERSE COVERSTITCH AT NECK, SLEEVE AND BOTTOM

55% COTTON / 45% MODAL

SIZES: 2XB-4XB, LT-4XLT

2559



NAVY

## JMST2790BT JO GLORY 2/15

---

CREW NECK TEE - RIB COLLAR - CHEST POCKET WITH EMBROIDERED LOGO TONAL REVERSE COVERSTITCH AT NECK, SLEEVE AND BOTTOM

100% COTTON

SIZES: 2XB-4XB, LT-4XLT

2559



STEEL